

RU



Professional Flow Cytometer Manufacturer



Flow cytometer
ZS-AE7S

Research Use Only



BioSino Bio-Technology and Science Inc.

Address: 27 Chaoqian Road, Changping District, Beijing, 102200, China

Tel & Fax : +86-10-69722840

Post Code: 215163

Email: biosino@zhongsheng.com.cn

Website: www.sinobio.com.cn

**Precision Medicine Research Center of Chinese Academy
of Sciences of Sciences**

BioSino Bio-Technology and Science Inc.

Flow Cytometer ZS-AE7S

We are committed to building our high-level flow cytometer for research and clinical diagnostics, and strive to become the leader of this industry in the future.

ZS-AE7S has many new features; modern shape, easy for use, accurate results, and marvelous experience



One-button operation



Auto-sampling design



Dual threshold acquisition

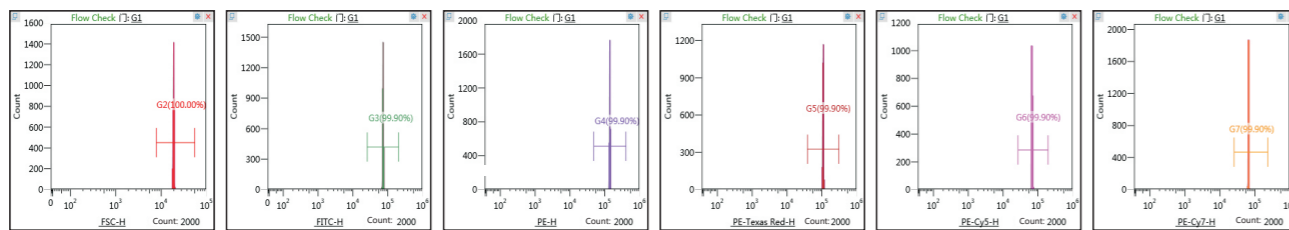


Automatic compensation

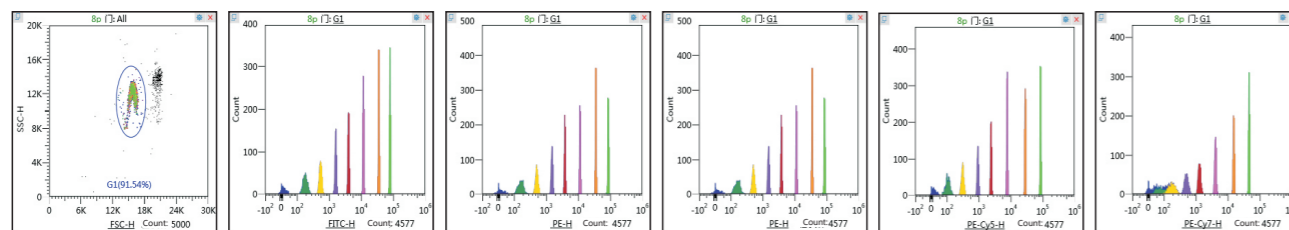


Accuracy

Excellent instrument resolution ratio: full peak width CV < 2%

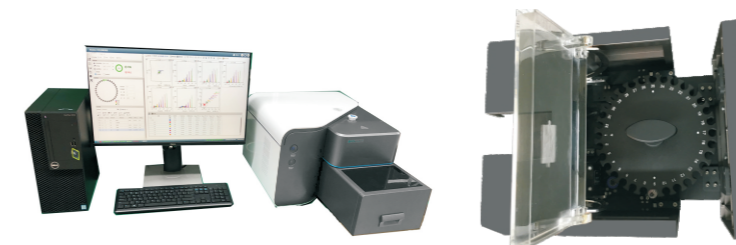


Excellent fluorescence detection limit: FITC < 100MESF, PE < 50MESF



Efficiency

32-test-tube turntable automatic loading module



Continuous testing speed up to 32 tests / hour.

Instrument Control, Item Control, Easy to use

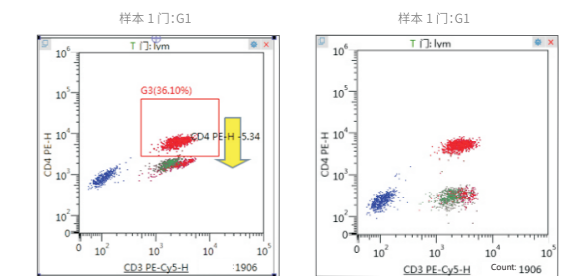


User-friendly

English Software, easy to learn

Graphical Fluorescence Compensation Tool

One-click imported template

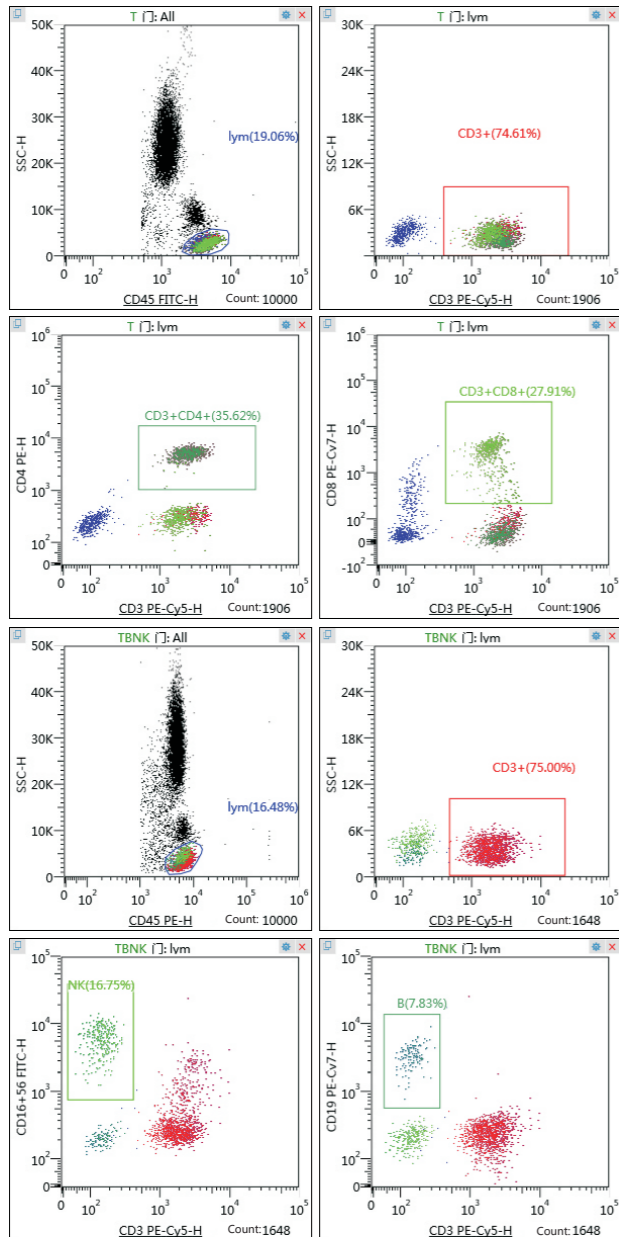


Clinical Application

ZS-AE7S Main Clinical Application Item

- Lymphocyte Subset T/B/NK Analysis; Absolute count of CD4+T lymphocyte
- Cytokine Th1/Th2/Th17 Analysis; HLA-B27 detection for AS
- Application of flow cytometry in reproduction

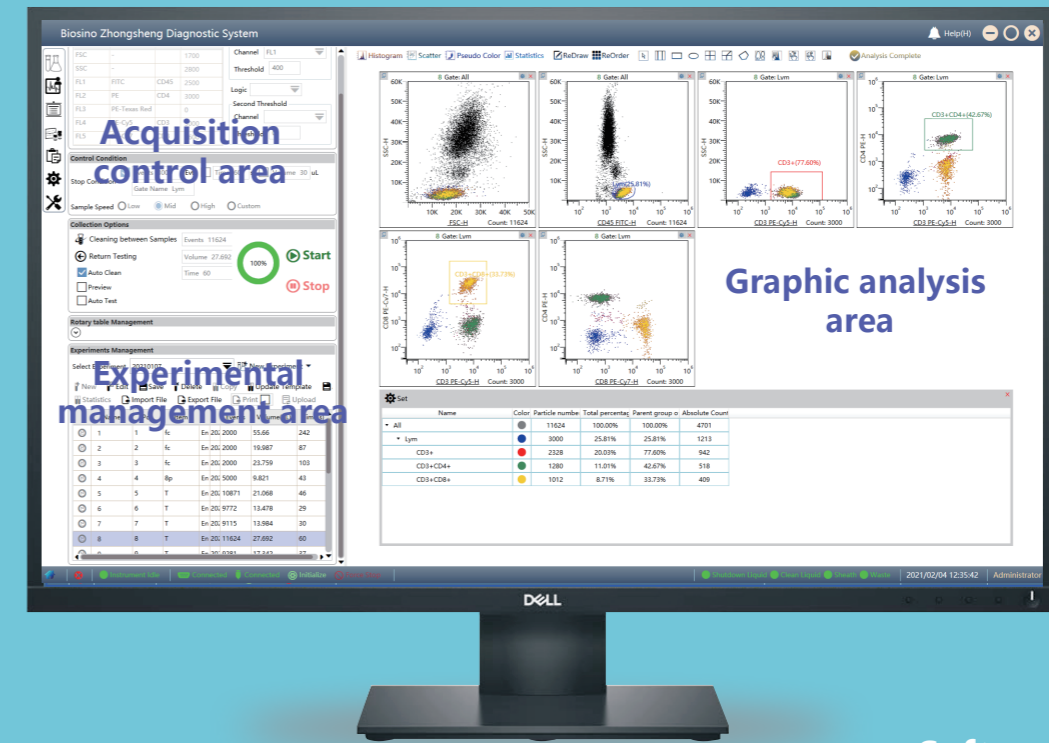
Lymphocyte Subset T/B/NK Analysis diagrams as below:



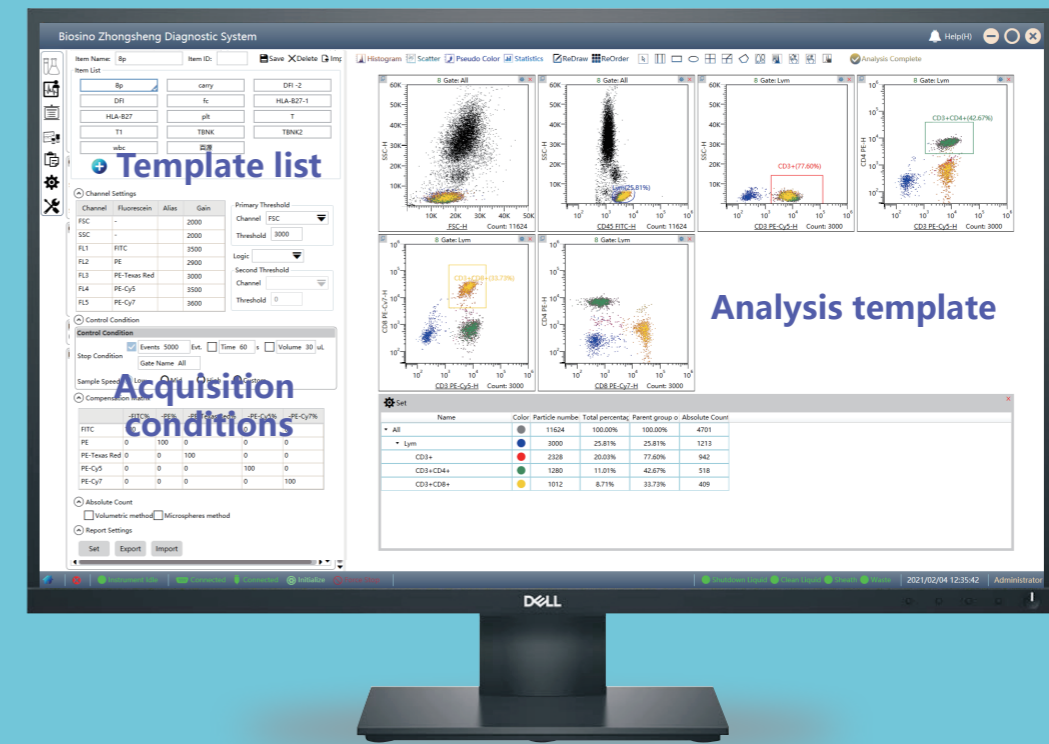
Recommended reagent information

Item	Recommended reagent	Application Department	
Lymphocyte Subset T Analysis	CD45-FITC CD4-PE CD3-PE-Cy5 CD8-PE-Cy7	Clinical Laboratory Infectious Disease Department Oncology Department Department of Rheumatology and	
Lymphocyte Subset T/B/NK Analysis	CD45-PE CD3-PE-Cy5 CD16-FITC CD56-FITC CD19-PE-Cy7	Immunology Department of Pediatrics blood specialty	
Absolute count of CD4+T lymphocyte	CD45-FITC CD4-PE CD3-PE-Cy5 CD8-PE-Cy7	CDC (AIDS) Infectious Disease Department	
Cytokine Th1/Th2/Th17 Analysis	Th1	IL-2 Infectious Disease Department IFN-γ Oncology Department TNF-α Department of Rheumatology and	
	Th2	IL-4 Immunology IL-6 Department of organ IL-10 transplantation Th17 IL-17 Respiratory department	
	HLA-B27 detection for AS	HLA-B27-FITC HLA-B7-PE	Department of Rheumatology and Immunology
		IgG2a-FITC IgG1-PE	Orthopaedics
	DFI analysis	Acridine orange (AO) staining solution	Reproductive Department Infertility Department Reproductive Medicine Centre

Software interface



Software main interface



Project Template



Service/After Sales



Free Training



Regular maintenance



Active care service



Professional Support

Configuration and main parameters of ZS-AE7S

Item	Parameters
Laser	488nm solid
Detector	FSC、SSC、FL1-FL5
Fluorescence Channel	FL1:525/50 (FITC) FL2:585/40 (PE) FL3:630/30 (PE-Texas Red/ECD/PI) FL4:697/60 (PerCP/PE-Cy5/PE-Cy5.5) FL5:780/60 (PE-Cy7)
Fluorescence sensitivity	FITC ≤ 100 MESF; PE ≤ 50 MESF
Fluorescence linearity	≥ 0.99
FSC sensitivity	≤ 1μm
Test particle size	0.5-50μm
Carry Over	≤ 0.5%
Instrument CV	FSC and all FL channel CV less than 2%
FSC and SSC CV	Can separate red blood cells and platelet, can separate white blood cells into 3 groups
Test speed	≥ 38000 cells/s
Minimum Sample Vol	90μL
Measure Range	Maximum Support 10 ⁷
Threshold	Double threshold, minimum cells fraction
Fluorescence compensation	Support auto online compensation, offline compensation and visualized compensation
Item Template	Support Item template, acquisition condition/ fluorescence compensation 1-click use
Intake method	Manual intake Rotary Wheel auto-sampling with auto- mixing function:32tests/wheel,
Liquid storage station	sheath bottle, waste bottle, shutdown liquid bottle 2L cleaning liquid bottle 0.5L
Software	English/Chinese
PC	Dell (CPU i5/8G DDR4/1T hard disk) +Dell 27 inches monitor
Size/ Weight	500mm*605mm*305mm (L*W*H) ,35KG